

N.Z. MODERN SCHOOL OF MUSIC
MODERN PIANO EXAMINATION SYLLABUS
GRADE SIX

TECHNICAL WORK: 20 marks

Comprehensive Book of Scales and Arpeggios

To be played from memory.

Scales: mm ♩ 120

Major Scales of G, D and F#

Four octaves, **similar motion**, ascending and descending, hands together.
Legato and staccato.

Harmonic Minor Scale of Eb

Melodic Minor Scales of D and E

Pentatonic Minor Scale of F

Two octaves, **similar motion**, ascending and descending, hands together.

Arpeggios: mm ♩ 108

G and D Major

Four octaves, ascending and descending, hands together.

F# Major

Eb Minor

A7 and Adim7

Two octaves, ascending and descending, hands together.

Inversions: mm ♩ 108

C7 and Gm7

Two octaves of root, first inversion, second inversion, third inversion.

Ascending only, hands together.

To be played as crotchets.

AURAL: 15 marks

- The examiner will play a phrase of six bars, twice. In 3/4 time.
The candidate will identify the dynamic and articulation changes within the phrase.
- The examiner will play an interval from the phrase being either a major or minor third or a major or minor sixth.
The candidate will then name that interval.
- The candidate will be given a copy of the phrase and the examiner will play it twice more.
A rhythm and pitch change will be included, and the candidate will identify the bars where the changes occurred.

VIVA VOCE: 10 marks

- General questions will be asked about **all** pieces performed and technical work for this grade.
- To explain the construction of the minor pentatonic scale and melodic minor scale.
- To name the diatonic triads of the major scale.

SIGHT READING: 15 marks

- To play a passage of up to twelve bars. In 4/4 time.
- **Must** include right hand harmony.
- **Must** include at least **two** of the following:
RH/Inv 8va higher Run/S.H. a major seventh ending run
- The bass style **must** be arpeggio OR stride.
- Chord symbols will be given for the left hand.

MELODY OUTLINE: 15 marks**Criteria for this section:**

- **Must** choose a time signature.
- **Must** add a four bar introduction.
- **Must** add a four bar ending.
- **Must** use a variety of note values between semiquaver and semibreve including quaver triplet(s).
- A note from the chord **must** be on the beat.
- A minimum of **two** bass styles to be chosen by the candidate.
- A minimum of **two** modern fills **must** be included.
- A minimum of **two** chord alterations **must** be used.
- **May** add one bar to facilitate a run or any other two bar improvisation.
- Expression and dynamics **must** be included and marked on the music.
- The work **must** be given a title.
- The work **must** have the composer's name.
- The final work **must** be neatly handwritten **by the candidate**.
- **A copy of the melody outline must be sent to the Area Manager 21 days prior to the commencement date of the examinations.**

PIECES: 25 marks for each piece. **Graded Tunes Book 5 and 6, Popular Songs Book 2, Syllabus**

Three pieces must be performed, **one** piece from each section.

All pieces **must** have an introduction and ending where none is given.

Expression and dynamics **must** be included and marked on the music.

Right hand **must** add harmony.

Bass chords **may** be played in different inversions.

May have chord substitution, alterations and additions.

Any alterations must be marked on the music **by the candidate**.

No repeats except D.C. or D.S. or as indicated for a specific piece.

The candidate should be encouraged to develop their own style(s), fills and arrangement.

Improvisation and rhythmic approach are expected for this grade.

All arrangements **must** include modern fills and be at a level suitable for this grade.

A copy of the arrangements **must** be given to the examiner on examination day.

Section I:**Graded Tunes Book 5 and 6**

Didn't We Almost Have It All	Book 6
Song for Guy	Book 6
Can't Smile Without You	Book 6
Feelings	Book 5 (play until "To Coda" then jump to Coda)

- Choose **one** piece from the publications listed above.

Criteria for this section:

- Freedom of arrangement.
- Bass style(s) to be chosen by the candidate.
- **Must** include a minimum of eight bars of a latin bass.
- **Must** include a minimum of five consecutive notes of a diatonic scale. In any one direction.
- **Must** include a run within the piece using any seventh chord.

Section II:

Chattanooga Choo Choo	Book 6
California Girls	Book 6
Jammin' the Blues	Syllabus
Backyard Boogie	Syllabus

- Choose **one** piece from the publications listed above.

Criteria for this section:

- **Must** include the notes of a pentatonic or minor pentatonic scale in an introduction, ending and/or fill.
- A section of the piece **must** modulate into a different key using **four** joining chords. The modulating chords **must** be marked on the music.
- Bass style(s) to be chosen by the candidate.
- **Must** include a minimum of **two** different Blues or Boogie Woogie bass styles.

Section III:**Popular Songs Book 2**

Crazy Little Thing Called Love
Pirates of the Caribbean
Fly Me to the Moon

- Choose **one** piece from the publication listed above.

Criteria for this section:

- Freedom of arrangement.
- Bass style(s) to be chosen by the candidate.

All markings must be removed from pieces except tidy fingering, expression marks and notation of arrangement.
STRICTLY NO PHOTOCOPYING

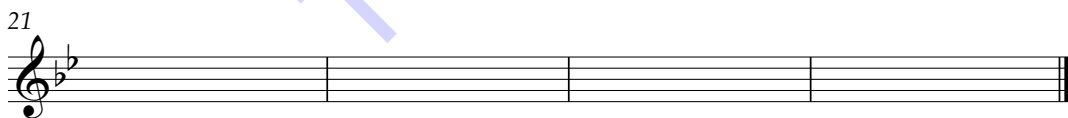
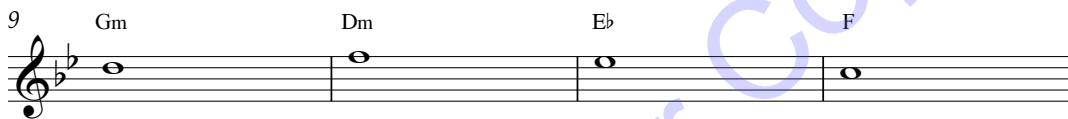
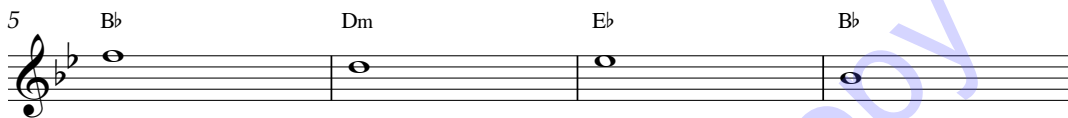
Melody Outline

Song Title:

Grade Six
Piano

Composer:

Intro:



Criteria:

- Must choose a time signature.
- A four bar introduction must be added.
- Must add a four bar ending.
- Must use a variety of note values between semiquaver and semibreve including quaver triplet(s).
- A note from the chord must be on the beat.
- A minimum of two bass style(s) to be chosen by the candidate.
- A minimum of two modern fills must be included.
- A minimum of two chord alterations must be used.
- May add one bar to facilitate a run or any other two bar improvisation.
- Expression and dynamics must be included and marked on the music.
- The work must be given a title.
- The work must have the composer's name.
- The final work must be neatly handwritten by the candidate.

Adopted 2024

Jammin' The Blues

1 F Bb7

6 F C7

10 F

15 Bb7 F

20 C7 F

25

29 Bb7 F C7

34 F

39 Bb7 F

44 C7 F6 Fm6 F7 Fm F6 F13

BassF
10th

Adopted 2024

Backyard Boogie

Swing quavers

Jessica Parker

The musical score for "Backyard Boogie" is written in G major and 4/4 time. It features a variety of rhythmic patterns, including swing quavers, triplets, and sixteenth-note runs. The piece is divided into measures, with measure numbers 5, 9, 13, 17, 21, 25, 29, 33, and 37 marked. Chords are indicated above the staff, and triplets are marked with a '3'.

Measures 1-4: G chord, swing quaver pattern.

Measures 5-8: C chord, eighth-note pattern.

Measures 9-12: G, D, C chords, eighth-note pattern with triplets.

Measures 13-16: G chord, eighth-note pattern with triplets.

Measures 17-20: C, G chords, eighth-note pattern with triplets.

Measures 21-24: D, C, G chords, eighth-note pattern with triplets.

Measures 25-28: Eighth-note pattern with triplets.

Measures 29-32: C, D, C chords, eighth-note pattern with triplets.

Measures 33-36: G chord, eighth-note pattern with triplets.

Measures 37-40: G, G7/B, C7, C#o, D, G chords, eighth-note pattern with triplets.

Adopted 2024