

N.Z. MODERN SCHOOL OF MUSIC
MODERN PIANO EXAMINATION SYLLABUS
GRADE FIVE

TECHNICAL WORK: 20 marks

Comprehensive Book of Scales and Arpeggios
Technical Resource, Syllabus

To be played from memory.

Scales: mm ♩ 108

Major Scales of B and Db
Harmonic Minor Scales of G# and Bb
Melodic Minor Scales of A
Pentatonic Major Scale of C
Blues Scale of G

Two octaves, **similar motion**, ascending and descending, hands together.

Triad: mm ♩ 96

Primary Triad Scale of E

One octave, ascending only.

Chords in bass position, one octave higher than in the scale book.

Arpeggios: mm ♩ 96

B and Db Major
G# and Bb Minor
G7

Two octaves, ascending and descending, hands together.

AURAL: 15 marks (Examiner to play twice)

- To recognize whether a chord played in root position is major, minor, augmented or diminished.
- To recognize whether a phrase is in a major or minor key.
- To identify the dynamic changes within a phrase.

VIVA VOCE: 10 marks

- General questions will be asked about **all** pieces performed and the technical work for this grade.
- To explain the construction of the blues and pentatonic scales.

SIGHT READING: 15 marks

- To play a passage of up to twelve bars. In 3/4 time.
- **Must** include at least **two** of the following:
 - ΛΛ 8va higher Run/S.H. a sixth ending/run
- Chord symbols will be given for the left hand.
- The bass style **must** be arpeggio OR standard waltz.

MELODY OUTLINE 15 marks**Criteria for this section:**

- **Must** choose a time signature.
- A four bar introduction **must** be added.
- **Must** add 8va higher.
- **Must** add harmony.
- **Must** add an ending.
- **Must** use a variety of note values between semiquaver and semibreve.
- A note from the chord **must** be on the beat.
- A minimum of **two** modern fills **must** be included.
- The bass style(s) to be chosen by the candidate.
- Expression and dynamics **must** be included and marked on the music.
- The work **must** be given a title.
- The work **must** have the composer's name.
- The final work **must** be neatly handwritten **by the candidate**.
- **A copy of the melody outline must be sent to the Area Manager 21 days prior to the commencement date of the examinations.**

PIECES: 25 marks for each piece.**Graded Tunes Book 5, Popular Songs Book 2**Three pieces must be performed, **one** piece from each section.**All** pieces **must** have an introduction and ending where none is given.Expression and dynamics **must** be included and marked on the music.Right hand **must** add harmony.Bass chords **may** be played in different inversions.Chords **may** be altered.Any alterations must be marked on the music **by the candidate**.

No repeats except D.C. or D.S. or as indicated for a specific piece.

The candidate should be encouraged to develop their own style(s), fills and arrangement.

All arrangements **must** include modern fills and be at a level suitable for this grade.A copy of the arrangements **must** be given to the examiner on examination day.**Section I:****Graded Tunes Book 5**

Over The Rainbow
Yesterday
As Long As He Needs Me
Where is Your Heart

- Choose **one** piece from the publication listed above.

Criteria for this section:

- **Must** include **three** or more different criteria from the following:

Run/S.H. ascending and descending Run/S.H. ^{^^} 8va higher any type of inversion(s) a change of key

- **Must** include the notes of a pentatonic or minor pentatonic scale in an introduction, ending and/or fill.
- Additional bars **may** be added to accommodate fills.
- Bass style(s) to be chosen by the candidate.

Section II:**Graded Tunes Book 5**

La Cumparsita
Spanish Eyes
Tijuana Taxi
You Belong To My Heart

- Choose **one** piece from the publication listed above.

Criteria for this section:

- **Must** use glissando.
- **Must** use grace notes.
- **Must** include a minimum of eight bars of a latin bass.
- Freedom of arrangement.
- Bass style(s) to be chosen by the candidate.

Section III:**Popular Songs Book 2**

Mamma Mia
Make You Feel My Love
Perfect

- Choose **one** piece from the publication listed above.

Criteria for this section:

- Freedom of arrangement.
- Bass style(s) to be chosen by the candidate.

All markings must be removed from pieces except tidy fingering, expression marks and notation of arrangement.
STRICTLY NO PHOTOCOPYING

Technical Resource

G# harmonic minor

Two systems of musical notation for the G# harmonic minor scale in 4/4 time. The first system shows the first two measures of the scale, with fingerings 3, 1, 1 in the treble and 3, 1, 4, 1, 3 in the bass. The second system shows the next two measures, with fingerings 1, 3, 4, 1 in the treble and 1, 1, 1 in the bass. The key signature has three sharps (F#, C#, G#) and the time signature is 4/4.

G# minor arpeggio

Musical notation for the G# minor arpeggio in 4/4 time. The treble clef part consists of two measures: the first measure has notes G#4, B4, D5 with fingerings 2, 1, 2, 4, 1; the second measure has notes G#4, B4, D5 with fingerings 4, 2, 2. The bass clef part consists of two measures: the first measure has notes G#2, B2, D3 with fingerings 3, 1, 4, 2, 1, 4, 2; the second measure has notes G#2, B2, D3 with fingerings 1, 2, 4, 1, 3. The key signature has three sharps (F#, C#, G#) and the time signature is 4/4.

G blues

Musical notation for the G blues scale in 4/4 time. The treble clef part consists of three measures: the first measure has notes G4, A4, B4, G#4 with fingerings 1, 1, 2, 1, 2; the second measure has notes G#4, A4, B4, G#4 with fingerings 3, 4, 1, 2, 3, 4; the third measure has notes G4, A4, B4, G#4 with fingerings 2, 1, 4. The bass clef part consists of three measures: the first measure has notes G2, A2, B2, G#2 with fingerings 5, 4, 2, 1, 4, 2; the second measure has notes G#2, A2, B2, G#2 with fingerings 1, 3, 2, 1, 2, 1; the third measure has notes G2, A2, B2, G#2 with fingerings 1, 2, 1, 1, 2, 4. The key signature has one sharp (F#) and the time signature is 4/4.

Adopted 2024

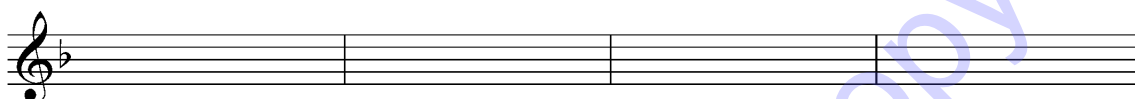
Melody Outline

Song Title:

Grade Five
Piano

Composer:

Intro:



5 F Am⁷ B \flat C

9 F Am⁷ B \flat C

13 B \flat C B \flat C

17 F Am⁷ C⁷ F

Criteria:

- Must choose a time signature.
- A four bar introduction must be added.
- Must add 8va higher.
- Must add harmony.
- Must add an ending.
- Must use a variety of note values between semiquaver and semibreve.
- A note from the chord must be on the beat.
- A minimum of two modern fills must be included.
- The bass style(s) to be chosen by the candidate.
- Expression and dynamics must be included and marked on the music.
- The work must be given a title.
- The work must have the composer's name.
- The final work must be neatly handwritten by the candidate.