

N.Z. MODERN SCHOOL OF MUSIC

GUITAR EXAMINATION SYLLABUS

INITIAL

TECHNICAL WORK: 20 marks

To be played from memory.

Scales: mm ♩ 76

C to G as a 5 Note Scale
 Strings 1 and 2, ascending only.
Must be played as crotchets.
Must be picked.
Must use i m fingering.
 Rest stroke.

Magic on Guitar: mm ♩ 76

Section 1, Exercise No. 1
 5th position.
 String 1: A A# B C
 String 2: E F F# G
Must be played as crotchets.
Must be picked.
Must use i m fingering.
 Rest stroke.

AURAL: 15 marks (Examiner to play twice on the piano)

- To clap or tap a three bar melody. In 2/4 time.
Time values include minim and crotchet.
- To clap time from a card.
Time values include semibreve, minim and crotchet.

VIVA VOCE: 10 marks

- General questions will be asked about **all** pieces performed, and the technical work for this grade.
- To name the parts of the guitar.
- To explain the time value of a given note.

SIGHT READING: 15 marks

- To strum a four bar passage. In 4/4 time.
- Chords of A and E7.
- Strum pattern:



PIECES: 30 marks for each piece.

Syllabus

Three pieces **must** be performed, **one** piece from each section.

Eight bar pieces **must** be repeated.

Section 1: Lead

Skip To My Lou (to be repeated)
Sur le pont D'Avignon (to be repeated)
Lightly Row

- Choose **one** piece from the list above.

Criteria for this section:

- **Must** be picked.
- **Must** use i m fingering.
- Rest Stroke.

Section II: Rhythm

Hokey Pokey
Michael Finnegan
The Alphabet Song

- Choose **one** piece from the list above.

Criteria for this section:

- **Must** be sung.
- Strum pattern:

□ □ □ □

Section III: Duet

- Choose **one** piece from either section A or B.

Section IIIA:

Merrily We Roll Along (to be repeated)
Twinkle, Twinkle, Little Star

Criteria for this section:

- **Must** be picked.
- **Must** use i m fingering.
- Rest stroke.
- **Must** be accompanied by another instrumentalist.
- The candidate **must** count in for the accompanist.

OR

Section IIIB:

The Maori Colours Song
Shellfish Song

Criteria for this section:

- The candidate **must** choose the strum.
- **Must** be accompanied by another instrumentalist.
- The candidate **must** count in for the accompanist.

All markings must be removed from pieces.

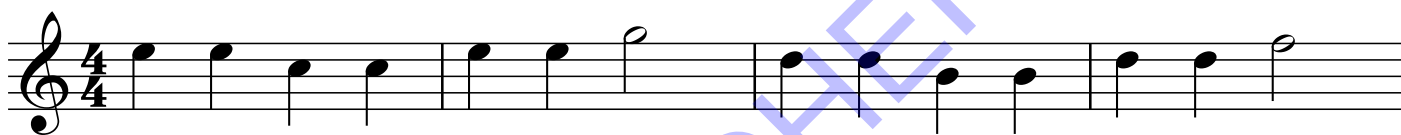
STRICTLY NO PHOTOCOPYING

Section I: Lead

Skip To My Lou

Moderato

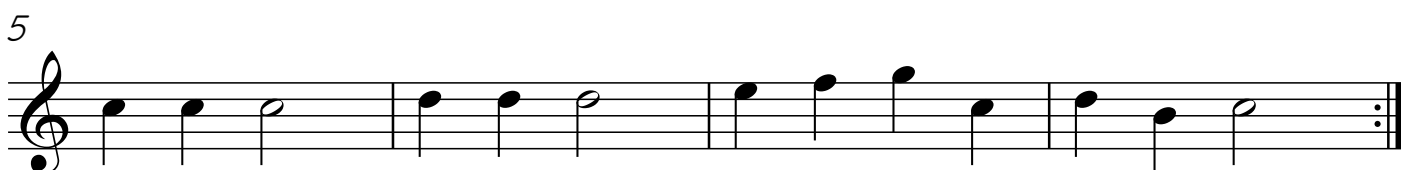
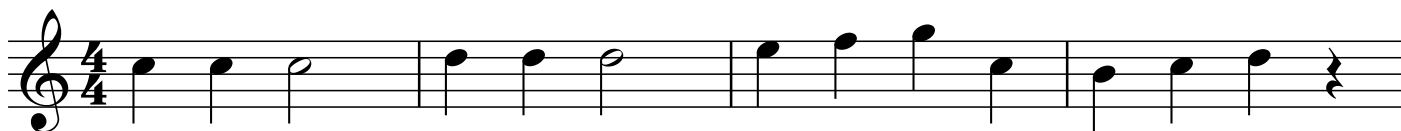
Children's Song



Sur Le Pont D'Avignon

Moderato

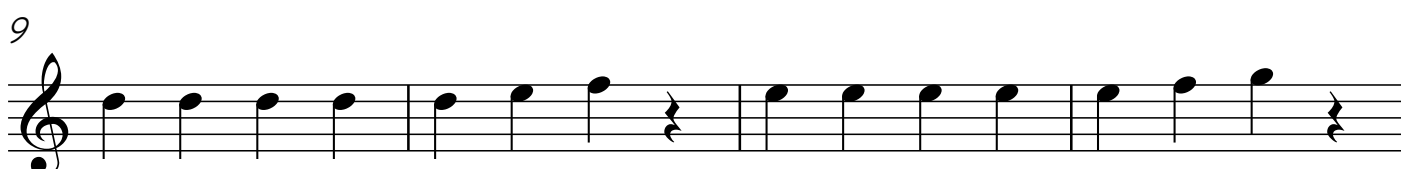
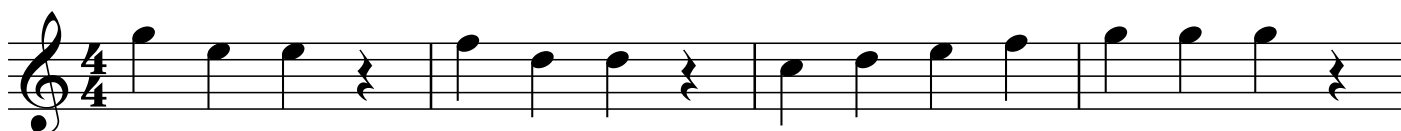
French Nursery Rhyme



Lightly Row

Moderato

Folk Song



Section II: Rhythm

Hokey Pokey

A **A**
You put your one hand in, you put your one hand out,
A **E7**
You put your one hand in and you shake it all about.
E7 **E7**
You do the hokey pokey and you turn yourself around.
E7 **A**
That's what it's all about.

A **A**
Oh hokey, hokey pokey.
A **E7**
Oh hokey, hokey pokey.
A **A**
Oh hokey, hokey pokey.
E7 **A**
That's what it's all about.

Michael Finnegan

A **A**
There once was a man named Michael Finnegan
E7 **E7**
He grew whiskers on his chin-a-gin.
A **A**
The wind came up and blew them in-a-gin
E7 **A**
Poor old Michael Finnegan begin-a-gin.

A **A**
There once was a man named Michael Finnegan
E7 **E7**
He went fishing with a pin-a-gin.
A **A**
Caught a fish and threw it in-a-gin
E7 **A**
Poor old Michael Finnegan begin-a-gin.

Section II: Rhythm

The Alphabet Song

A **D** **A**

A, B, C, D, E, F, G,

E7 **A** **E7** **A**

H, I, J, K, LMNO, P

A **E7** **A** **E7**

Q, R, S and T, U, V.

A **E7** **A** **E7**

Dou-ble U and X, Y, Z.

A **D** **A**

Now you've heard my A, B, C

E7 **A** **E7** **A**

Tell me what you think of me.

Section IIIA: Duet

Merrily We Roll Along

Happily Nursery Rhyme

Mer - ri - ly we roll a - long, roll a - long, roll a - long.
Mer - ri - ly we roll a - long, all the live long day.

Detailed description: This block contains the musical notation for the song 'Merrily We Roll Along'. It is written in 4/4 time and consists of two staves. The first staff starts with a treble clef and a 4/4 time signature. The melody is simple, using quarter and half notes. Chords are indicated above the staff: C, G7, and C. The lyrics are 'Mer - ri - ly we roll a - long, roll a - long, roll a - long.' The second staff begins with a measure rest labeled '5', followed by the melody 'Mer - ri - ly we roll a - long, all the live long day.' Chords C, G7, and C are indicated above the staff. The piece ends with a double bar line and repeat dots.

Twinkle, Twinkle, Little Star

Flowing Nursery Rhyme

Twink - le, twink - le, lit - tle star, how I won - der what you are.
Up a - bove the world so high, like a dia - mond in the sky.
Twink - le, twink - le, lit - tle star, how I won - der what you are.

Detailed description: This block contains the musical notation for the song 'Twinkle, Twinkle, Little Star'. It is written in 4/4 time and consists of three staves. The first staff starts with a treble clef and a 4/4 time signature. The melody is simple, using quarter and half notes. Chords are indicated above the staff: C, F, C, F, C, G7, and C. The lyrics are 'Twink - le, twink - le, lit - tle star, how I won - der what you are.' The second staff begins with a measure rest labeled '5', followed by the melody 'Up a - bove the world so high, like a dia - mond in the sky.' Chords C, F, C, G7, C, F, C, and G7 are indicated above the staff. The third staff begins with a measure rest labeled '9', followed by the melody 'Twink - le, twink - le, lit - tle star, how I won - der what you are.' Chords C, F, C, F, C, G7, and C are indicated above the staff. The piece ends with a double bar line and repeat dots.

Section IIIB: Duet

Shellfish Song

Lively

Traditional Nursery Rhyme
Lyrics by Nicole Baker

A

One lit - tle, two lit - tle, three lit - tle pi - pis.

3 E⁷

Four lit - tle, five lit - tle, six lit - tle pā - ua.

5 A

Se - ven lit - tle, eight lit - tle, nine lit - tle tu - a tu - as.

7 E⁷ A

Ten spi - key ki - na. One lit - tle, two lit - tle,

10 A E⁷

three lit - tle scal - lops. Four lit - tle, five lit - tle,

12 E⁷ A

six lit - tle cock - les. Se - ven lit - tle, eight lit - tle,

14 A E⁷ A

nine lit - tle oys - ters. Ten green lipped mus - sels.

Section IIIB: Duet

The Māori Colours Song

Walking pace

Traditional NZ song

A E7

Mā is white, whe-ro is red, kā - kā - ri - ki, green.

5 E7 A

Pan-go is black, ma-ngu is too, A, E, I, O, U.

9 A E7

Kō-whai, yel - low, pa-rau - ri, brown, ki - ko - rang - i, blue.

13 E7 A

Pa-ra-ka - ra - ka is our or-ange. A, E, I, O, U.