

# Melody Outline

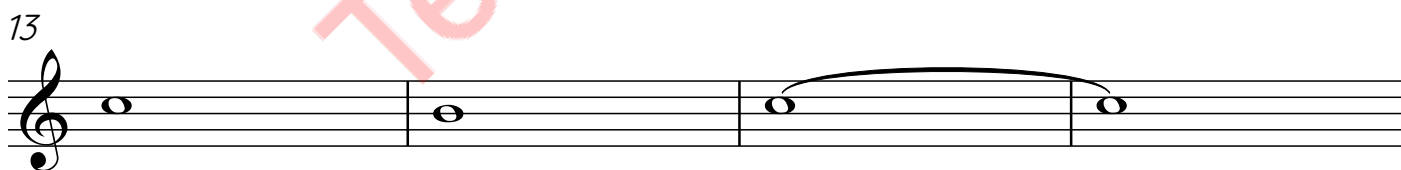
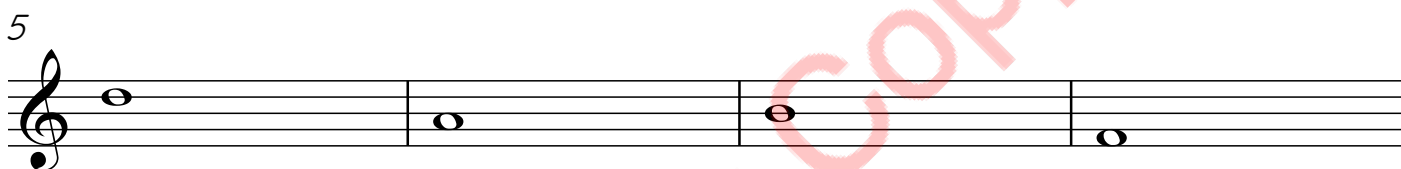
Grade Seven  
Guitar

Song Title.....

## Intro



## Part One



**Refer to the syllabi for general criteria.**

- \* The four bar introduction must include chords and a melody line.

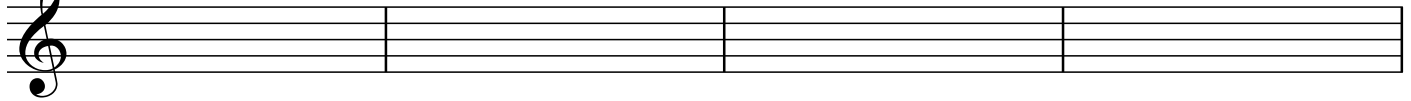
**Part One Bars 1 to 16:**

- \* The melody may include notes of the chord and/or passing notes.
- \* Must be chorded with one chord per bar.
- \* The bass progression of **IIm V7 I** must be included at least once.

## Part Two

Grade Seven  
Guitar

17 F F C C

A musical staff with a treble clef, divided into four measures. Above the staff, the chords F, F, C, and C are written above the first, second, third, and fourth measures respectively.


21 Dm Dm G<sup>7</sup> G<sup>7</sup>

A musical staff with a treble clef, divided into four measures. Above the staff, the chords Dm, Dm, G<sup>7</sup>, and G<sup>7</sup> are written above the first, second, third, and fourth measures respectively.

25 C C Dm Dm

A musical staff with a treble clef, divided into four measures. Above the staff, the chords C, C, Dm, and Dm are written above the first, second, third, and fourth measures respectively.

29 F G<sup>7</sup> C C

A musical staff with a treble clef, divided into four measures. Above the staff, the chords F, G<sup>7</sup>, C, and C are written above the first, second, third, and fourth measures respectively. The staff ends with a double bar line.**Part Two Bars 17 to 32:**

- \* A more comprehensive melody must be added.
- \* The time signature may be changed.
- \* Freedom of harmonization.