

N.Z. MODERN SCHOOL OF MUSIC
KEYBOARD EXAMINATION SYLLABUS
GRADE SIX

TECHNICAL WORK: 20 marks

Comprehensive Book of Scales and Arpeggios
Magic for Modern Book

To be played from memory.

Scales: mm ♩ 120

Major Scale of Db
Harmonic Minor Scales of F#, C# and F
Melodic Minor Scales of D and G
Pentatonic Minor Scale of G
Diminished Scale of F

Two octaves, **similar motion**, ascending and descending, **hands together**.

mm ♩ 84

Blues Scale of F

One octave, ascending and descending, **hands together**.

L.H. chords as per the scale book.

One chord per beat.

Arpeggios: mm ♩ 108

Minor keys of C# and C
Dominant seventh in the keys of Bb and Db
Diminished seventh in the keys of F and C

Two octaves, ascending and descending, **hands together**.

Study: mm ♩ 96

Magic for Modern, Exercise No.62, (XI)

Must use a 4/4 March beat, no auto accompaniment.

AURAL: 15 marks

- The examiner will play a phrase of six bars, twice. In 3/4 time.
The candidate will then state whether it is in a major or minor key.
- The examiner will play an interval from the phrase being either a major or minor third or a major or minor sixth.
The candidate will then name that interval.
- The candidate will be given a copy of the phrase and the examiner will play it twice more.
A time value and a pitch change will be included and the candidate will identify the bars where the changes occurred.

VIVA VOCE: 10 marks

- General questions will be asked about **all** pieces performed and the technical work for this grade.
- To explain the construction of the diminished scale.
- To name the diatonic triads of a major scale.
- To name the dominant chord of a given key.

SIGHT READING: 15 marks

- To play a passage of up to sixteen bars. In 4/4 time.
- **Must** include at least two of the following:
8va Harmony Quaver triplets $\wedge \wedge$ R.H/Inv.
- **Must** include **two** manual fills not previously performed.
- **Must** include a manual ending.
- A latin auto accompaniment and fingered chords **must** be used.

MELODY OUTLINE: 15 marks**Criteria for this section:**

- The four bar introduction must include a melody line and chords.
- Time values of a semibreve to a quaver and quaver triplet (inclusive) **must** be used.
- The melody **must** be harmonized for a minimum of **eight** bars.
- **Must** include passing notes.
- A minimum of **two** modern signs **must** be included.
- **Must** use a 4/4 auto accompaniment.
- The pentatonic scale **must** be used as an ending.
- Expression and dynamics **must** be included and marked on the music.
- Voice, style and tempo registrations **must** be marked on the music.
- The work **must** be given a title.
- The final work **must** be either computer written or hand written **by the candidate**.
- **A copy of the melody outline must be sent to the Area Manager 21 days prior to the commencement date of the examinations, as specified on the NZMSM calendar.**

PIECES: 25 marks for each piece.

Graded Tunes, Book 6
Alfred's Basic Piano Library, Solo Books Level 4 and 5
Nature's Best Book or Nature's Best, Book 2
Syllabus

Three pieces **must** be performed, **one** piece from each section.

All pieces **must** have an introduction and ending where none is given.

Voice, style and tempo registrations **must** be marked on the candidate's music.

Touch response **must** be used if available on the candidate's keyboard.

Expression and dynamics **must** be included where touch response is available, and marked on the music.

Bass chords **may** be played using different inversions.

The candidate should be encouraged to develop style and arrangements suitable for this level within the criteria.

Section I:**Book 6**

Chattanooga Choo Choo	page 2
Song for Guy	page 12
California Girls	page 18
Jammin' the Blues	Syllabus

- Choose **one** piece from the publication listed above.
- Auto accompaniment and fingered chords **must** be used.

Criteria for this section:

- **Must** include the pentatonic minor, diminished or blues scale or part thereof as an introduction, fill and/or ending.
- **Must** change voice.
- **May** include manual fills.

No repeats except D.C. or D.S. or as indicated for a specific piece.

Section II: Alfred's Basic Piano Library, Solo Books, Level 4 and 5

- Choose **one** piece from the publications listed above.
- Auto accompaniment and fingered chords **must** be used.

Criteria for this section:

- **May** change the time signature.
- **Must** include the blues scale or part thereof.
- The piece **must** be chorded.
- A section of the piece **must** modulate into a different key using **four** joining chords.
- **May** include a manual bass section for part of the piece.
- The candidate **must** include some degree of arrangement.
- Any alterations **must** be marked on the music **by the candidate**.
- **A copy of the arrangement must be sent to the Area Manager 21 days prior to the commencement date of the examinations as specified on the NZMSM Calendar.**

No repeats except D.C. or D.S. or as indicated for a specific piece

Section III: Nature's Best Book or Nature's Best, Book 2

- Choose **one** piece not previously performed from the publications listed above.
- Both manual bass and auto accompaniment **must** be used.

Criteria for this section:

- The bass style chosen **must** be one not previously performed for this grade.
- Any alterations **must** be marked on the music **by the candidate**.
- **A copy of the arrangement must be sent to the Area Manager 21 days prior to the commencement date of the examinations as specified on the NZMSM Calendar.**

Repeats are optional.

All markings must be removed from pieces except tidy fingering, expression marks, registration settings and notation of arrangement.

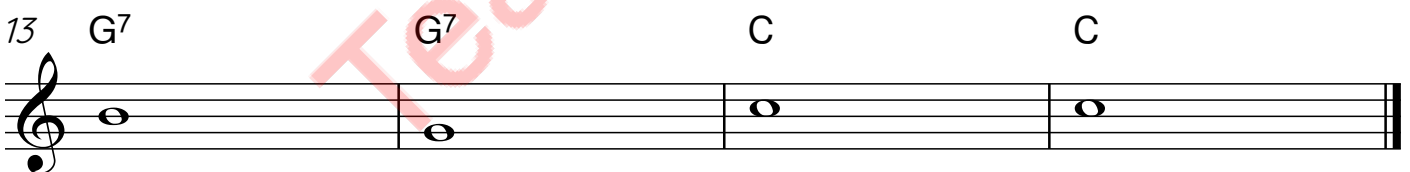
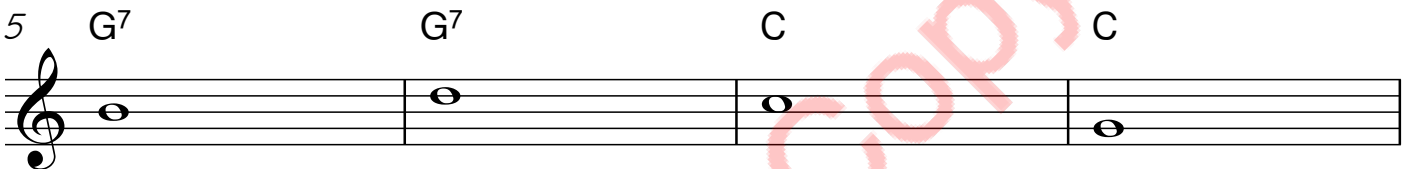
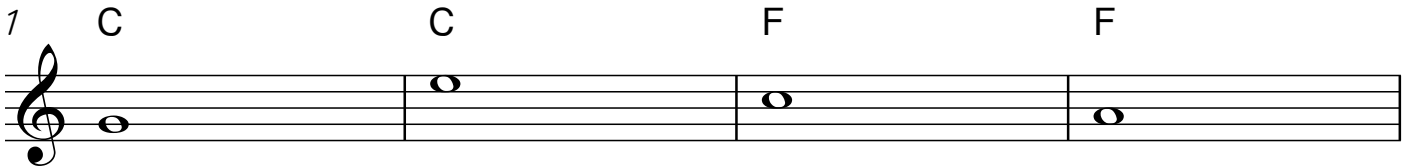
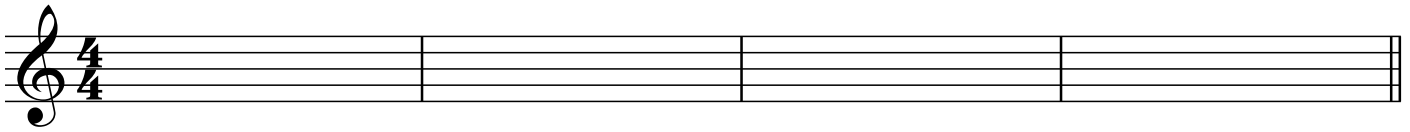
STRICTLY NO PHOTOCOPYING

Melody Outline

Grade Six
Keyboard

Song Title.....

Intro



Criteria:

* The four bar introduction must include a melody line and chords.

Bars 1 to 16:

- * Time values of a semibreve to a quaver and quaver triplet (inclusive) must be used.
- * The melody must be harmonized for a minimum of eight bars.
- * Must include passing notes.
- * A minimum of two modern signs must be included.
- * Must use a 4/4 auto accompaniment.
- * The pentatonic scale must be used as an ending.
- * Expression and dynamics must be included and marked on the music.
- * Voice, style and tempo registrations must be marked on the music.
- * The work must be given a title.
- * The final work must be either computer written or hand written by the candidate.

JAMMIN' THE BLUES

Example of Twelve Bar Blues pattern

Bass line in 4/4 time, starting with a repeat sign. Chords: F, Bb7, C7.

1 Treble line, measure 1. Chord: F, Bb7.

6 Treble line, measure 6. Chords: F, C7.

10 Treble line, measure 10. Chord: F.

15 Treble line, measure 15. Chords: Bb7, F.

20 Treble line, measure 20. Chords: C7, F.

25 Treble line, measure 25.

28 Treble line, measure 28. Chords: Bb7, F.

33 Treble line, measure 33. Chords: C7, F.

37 Treble line, measure 37.

41 Treble line, measure 41. Chords: Bb7, F.

45 Treble line, measure 45. Chords: C7, F6, Fm6, F7, Fm, F6, F13.

BassF
10th